

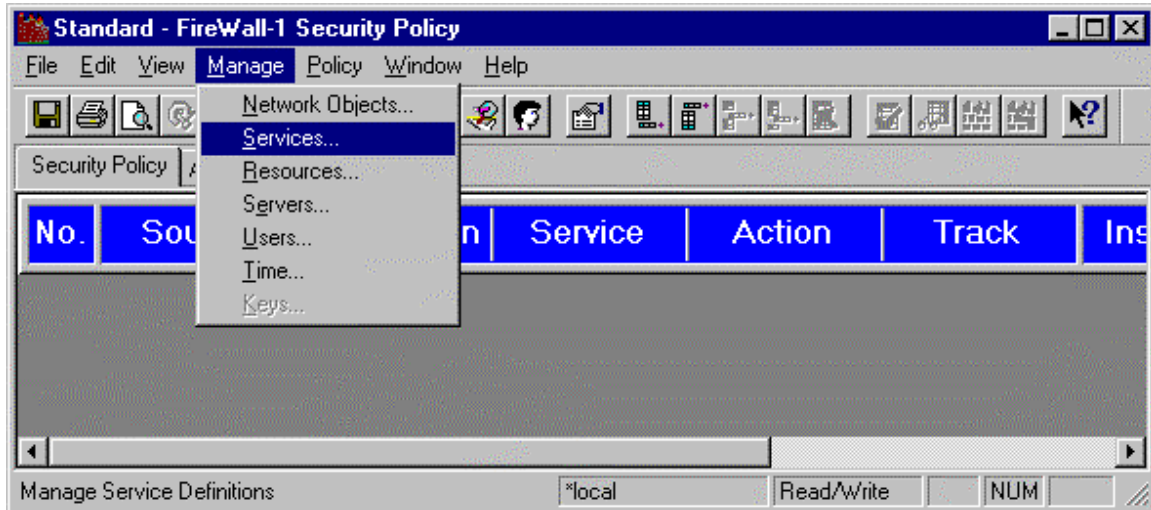
Check Point Software Technologies LTD.

How to Define a New Service

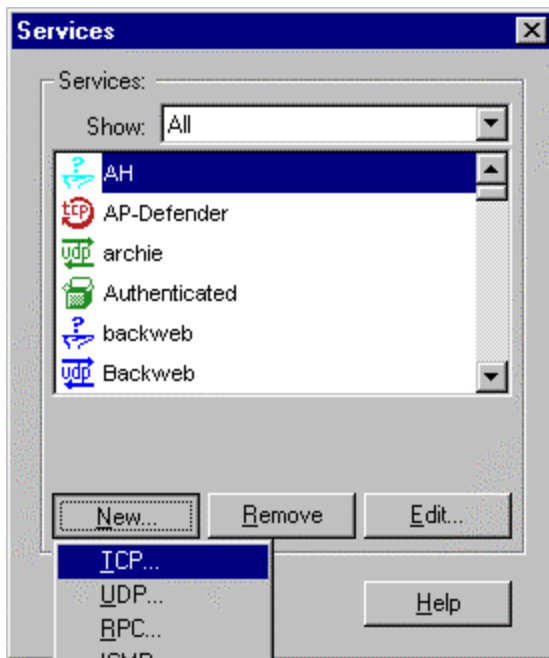
How to Define a new Service.

Simply select

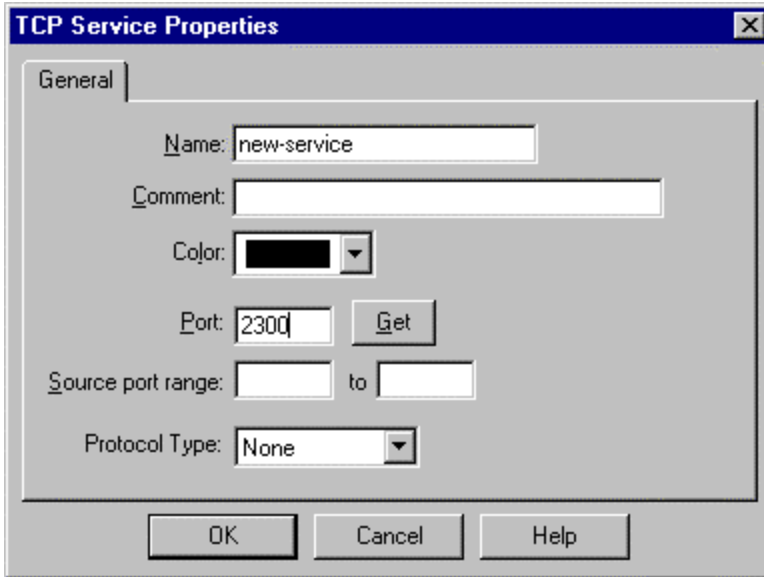
Manage → Services



From here, select **New → TCP**



Now Define the Name of the service, like **“New-service”**, and the port number **2300** for example. You can also “Lock” down the source port range if you so desire.



Now you can add this to the rule base as follows in the services column. This rule will allow anyone to get access to the Web Server using this new-service on port 2300.

