

Check Point Software Technologies LTD.

***User Authentication with Primary
Domain Controller (PDC) in NT***

Lets start from scratch.

Two empty boxes, one for the firewall, one for the PDC.

Loading the OS:

Start by loading NT on the PDC box. Once loaded and configured as a PDC, he is ready to authenticate users to his domain for login.

Load NT on the firewall and make him a standalone workstation.

Integration

Make the firewall a member of the PDC's domain. This will give us the ability to specify the PDC as the authenticator for logins.

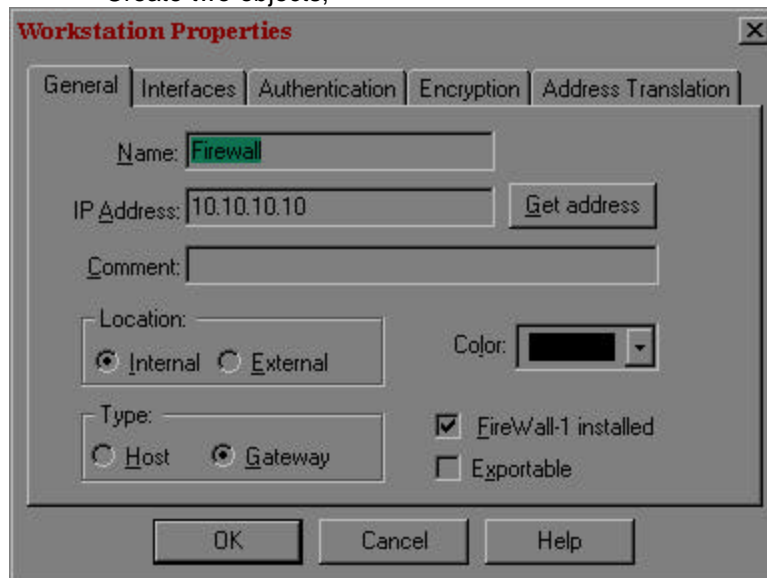
We have now finished the box configurations.

Firewall Setup

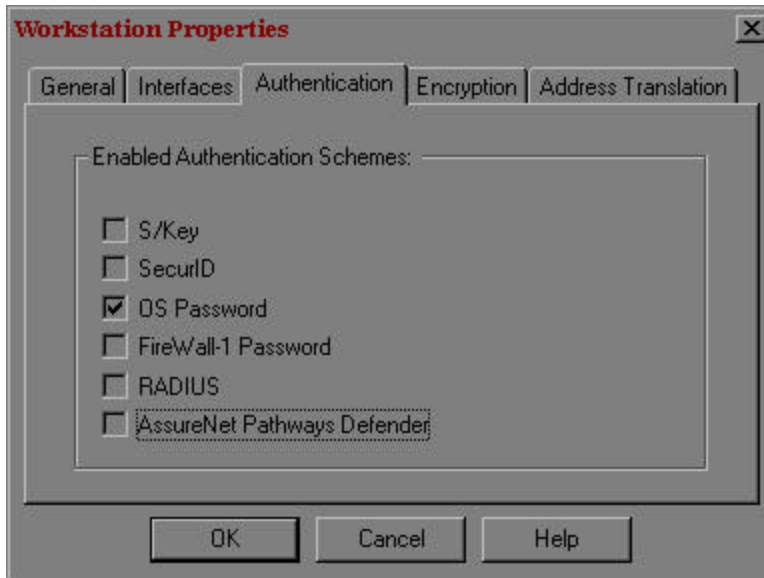
_____Load the firewall software on the Firewall box.

object creation

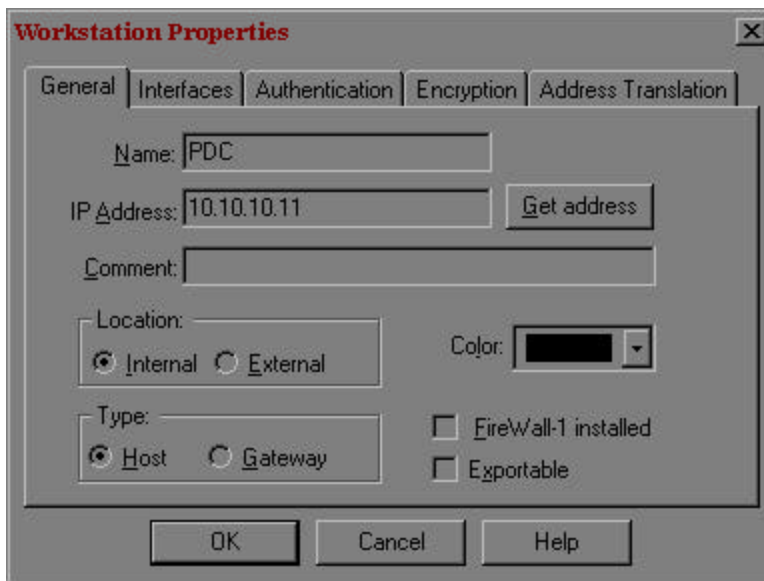
Create two objects,



With the authentication method set to OS password.



and the PDC

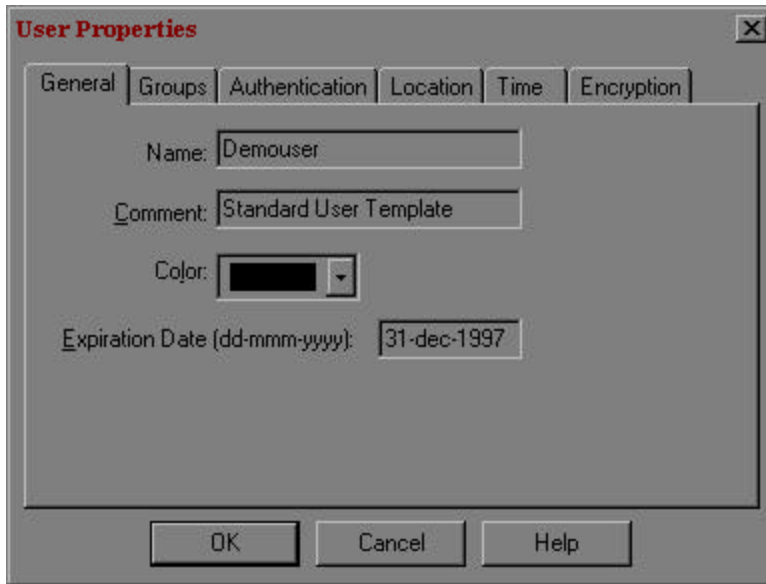


User Creation

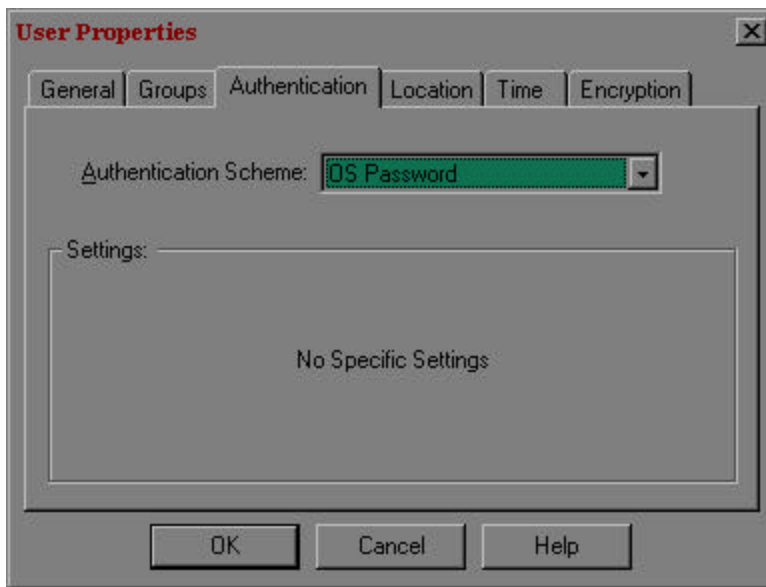
There are two methods that may be utilized for authentication of users to the NT PDC. The first is specifying the authentication method for the user as OS Password, the second is using the "*generic" user.

First

Define a user



with authentication set to OS password.



Now that the user is defined, we generate a rule that will authenticate the user

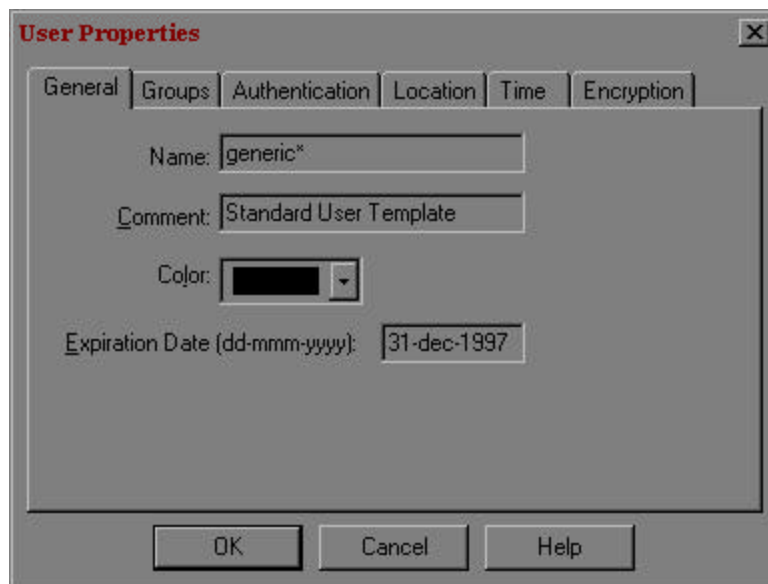


Now if the user opens a telnet session, the firewall will trap the session and authenticate the user to the OS password which in this case will be forwarded to the PDC.

Hence authentication to the PDC from the firewall.

Second.

Define a user generic*



Once created, the firewall will authenticate the user to an external name server, PDC, with the users name.

Thats it.

Note that there is one more screen that the local mode of the GUI did not show, the authentication tab. This tab will ask for the server to do the authentication for the generic user.

Referenced on page 66 of Windows GUI manual.

PJH