

Check Point Software Technologies LTD.

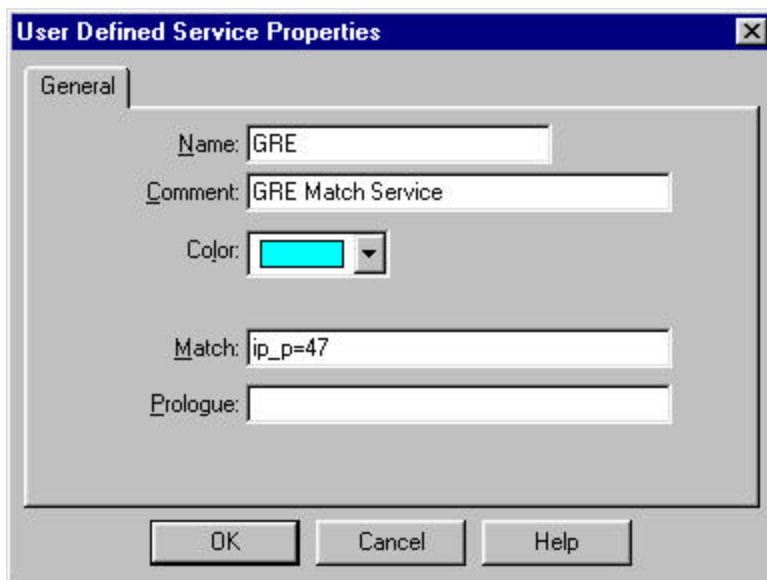
Creating A Service For Microsoft's:
PPTP Encryption

Creating A Service For Microsoft's: PPTP Encryption

This is a simple step by step procedure to configure Microsoft's PPTP (Point To Point Tunneling Protocol) as a service in FireWall-1 v3.0. This service will allow successful inspected communication between the PPTP server and its clients. Note, the latest version of CheckPoint Software Technologies SecuRemote supports packet encapsulation for DES and FWZ1 (Tunneling) which may be a consideration in some configurations over using PPTP. The service will consist of 2 generic services grouped together as one Service object.

NOTE: *PPTP Will Not Work with NAT in v3.x or v4.0. The PPTP Server must be on a legal Segment.*

Step-1: Configure The Generic Services



The 'User Defined Service Properties' dialog box is shown with the 'General' tab selected. The fields are filled with the following information:

- Name: GRE
- Comment: GRE Match Service
- Color: A cyan color swatch is selected from a dropdown menu.
- Match: ip_p=47
- Prologue: (empty)

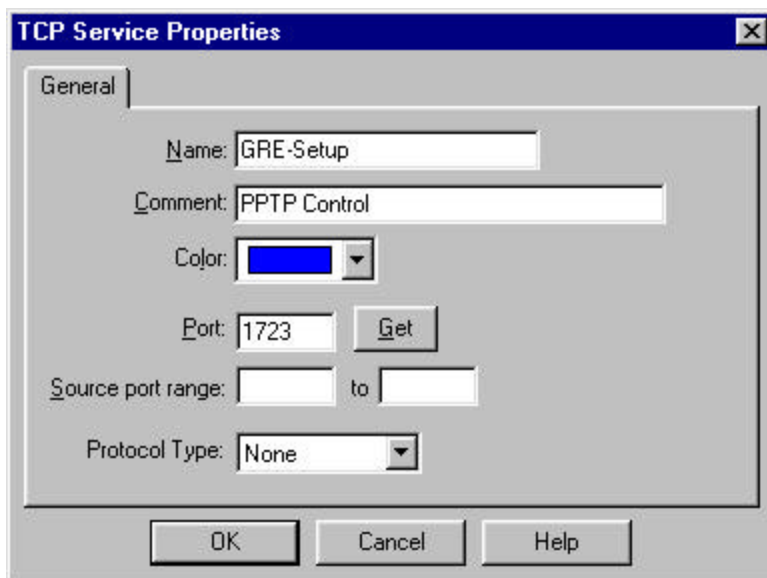
Buttons at the bottom: OK, Cancel, Help.

A) Open the Services dialog box from the Manage drop down menu on the GUI Client and select New -> Other.

(*Manage -> Services -> New -> Other*).

B) Enter the Information for the PPTP protocol 47 match as shown.

C) Click OK when finished.



The 'TCP Service Properties' dialog box is shown with the 'General' tab selected. The fields are filled with the following information:

- Name: GRE-Setup
- Comment: PPTP Control
- Color: A blue color swatch is selected from a dropdown menu.
- Port: 1723 (with a 'Get' button next to it)
- Source port range: (empty) to (empty)
- Protocol Type: None

Buttons at the bottom: OK, Cancel, Help.

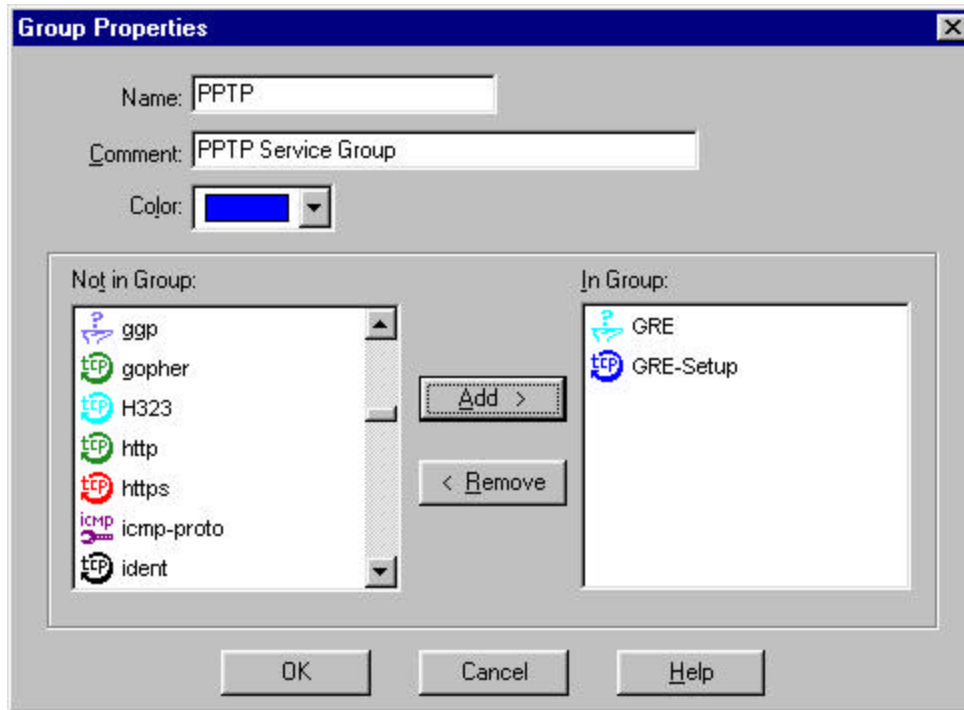
A) For the next service Select New -> TCP to open the TCP Generic Service dialog box.

(*New -> TCP*)

B) Insert the information necessary for the PPTP control connection.

C) Click OK when finished.

Step-2: Configure The PPTP Group:



A) From the Services Dialog Box select New -> Group to create a Group Object.

(New -> Group)

B) Select and Add both the **GRE** and **GRE-Setup** Services we created to the group.

C) Click OK when finished

Step-3: Configure The Rule Base:

NOTE: When configuring your rule base be sure not to inhibit the reverse communication from the PPTP server back to the PPTP clients. PPTP requires 2-Way communication and a common mistake is to have a rule stating (Any -> PPTP-Server -> PPTP -> Accept) and nothing allowing the reverse communication.

A typical Rule for PPTP could look like this:

