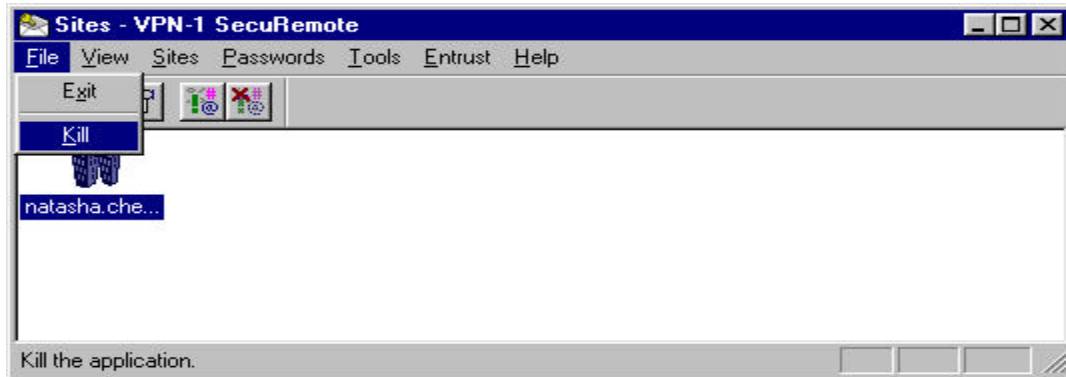


## Caching SecuRemote credentials on Win95/98 Desktops:

- 1) Kill SecuRemote from the active toolbar:



- 2) Remove the SecuRemote auto start key from the registry:

**Goto ->** *HKEY\_LOCAL\_MACHINE\Software\Microsoft\Windows\CurrentVersion\run*

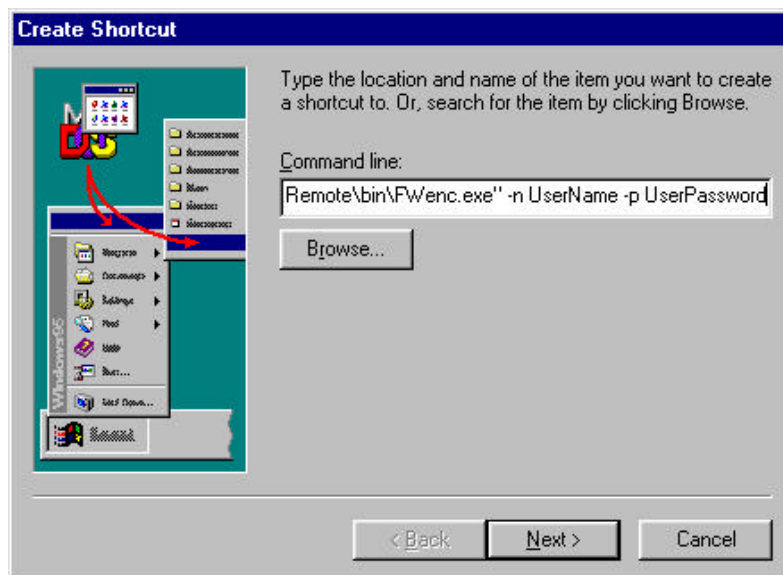
**Delete this entry:**

*"C:\Program Files\CheckPoint\SecuRemote\bin\fwenc.exe"*

- 3) In the Windows Startup group create the following shortcut where you add the *-n* and *-p* options to cache the user credentials for SecuRemote.

**NOTE:** The user credentials must be a static scheme like Firewall-1 password.

**NOTE:** The path for SecuRemote by default is C:\program files\checkpoint\secureremote\bin\fwenc.exe  
You have to enclose the full path name in quotes if the path contains spaces. Using "fwenc.exe -n username -p password", or "fwenc.exe -c certificate-full-name -p password", the username, password and certificate-full-name may not contain spaces.



Reboot the system.

Check Point Software Inc.

**NOTE:** There are security considerations to doing this on Win95/98 i.e. if a laptop gets lost or stolen the SecuRemote credentials are out in the open. A more secure solution is to use an NT client and utilize the Single Sign On (SSO) integration with the NT Domain or Desktop login. This integration is currently only available on the v4.0SP1 NT SecuRemote client running on NT Server or Workstation version 4.0.