

Check Point Software Technologies LTD.™

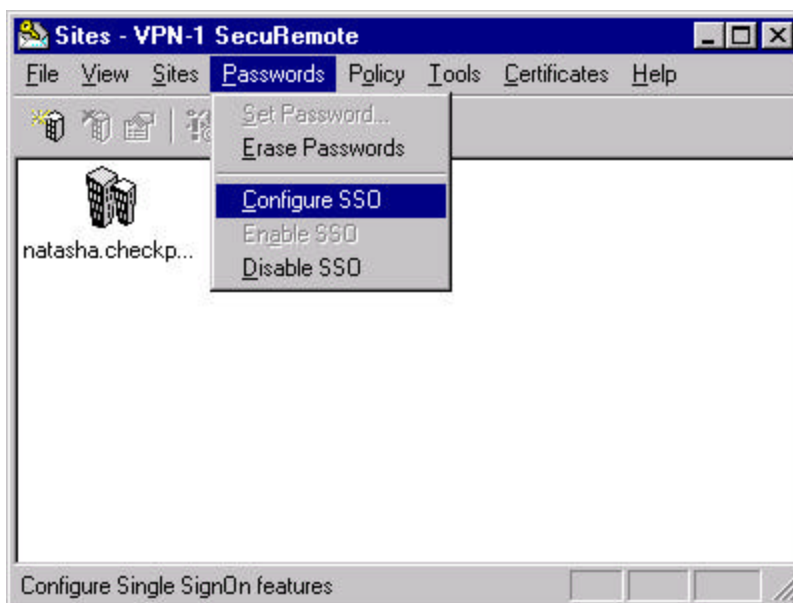
Configuring Single SignOn

Jeff Schwartz
Area Technical Consultant
8.19.99

Quick Install: SecuRemote Single SignOn v4.x

The Single SignOn option allows you to save your SecuRemote user name and password so they do not have to be entered manually in the future. Single SignOn is suitable for SecuRemote installations with a single site defined unless the multiple sites have the same login credentials. SSO will not work with One-Time passwords including S/Key, Security Dynamics Tokens, etc. The authentication scheme must be static.

NOTE: This option is for Windows NT users only.



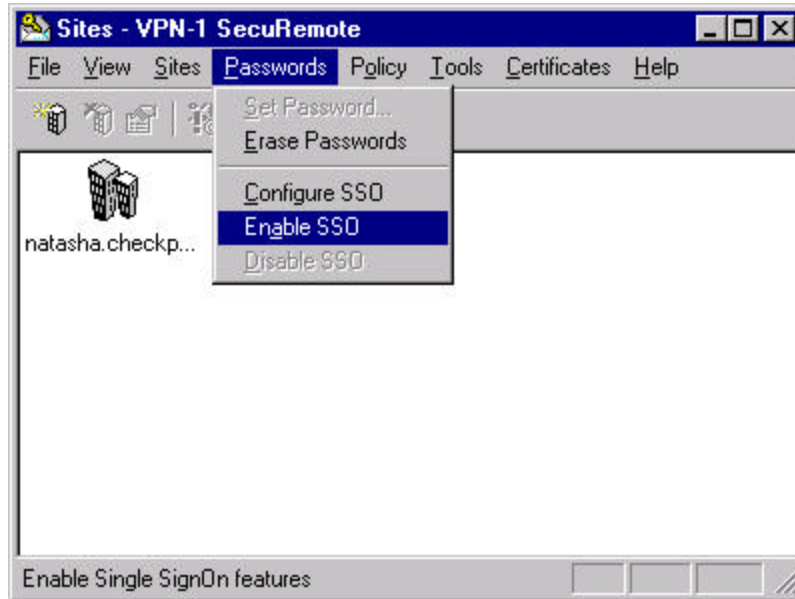
To Configure Single SignOn:

1. In the Single SignOn window, enter the following information:
 - Windows NT User Name
 - Windows NT Password
 - SecuRemote User Name
 - SecuRemote Password

A screenshot of the 'Single SignOn' dialog box. It contains six input fields: 'NT User Name:', 'NT Password:', 'Confirm:', 'SecuRemote User Name:', 'SecuRemote Password:', and 'Confirm:'. At the bottom, there are three buttons: 'OK', 'Cancel', and 'Help'.

After you enter your Windows NT and SecuRemote credentials, you must enable Single SignOn. To Enable Single Sign On:

1. From the Passwords menu, choose Enable SSO.



2. Reboot

Your SecuRemote credentials are encrypted in the Windows NT registry. On future boots, you will not be prompted for this information. Upon successful login to Windows NT, your encrypted SecuRemote credentials are sent to the Firewall, where they are decrypted and stored for the length of your session.

To Disable SSO, simply select it from the menu options.